

# ROTARY PEELER RS

## Instruction Manual



All rights reserved, in particular the rights of duplication and distribution as well as translation. Duplication and reproduction in any form (print, photocopy, microfilm or electronic) require the written permission of Georg Fischer Piping Systems Ltd.

## CONTENTS



GENERAL INFORMATION	4
WARNING MESSAGES	4
OTHER SYMBOLS AND DISPLAYS	4
ABBREVIATIONS	5
1. SAFETY NOTES	5
1.1 PROPER USE	5
1.2 SAFETY INSTRUCTIONS	5
1.3 WORK SAFELY	5
1.4 WASTE DISPOSAL	6
1.5 FURTHER SAFETY REGULATIONS	6
2. GENERAL	6
2.1 INTRODUCTION	6
2.2 RANGE OF APPLICATION	6
2.3 FUNDAMENTAL TIPS	6
2.3.1 General Tips for Preparation and Assembly of Fittings	7
2.4 COPYRIGHT	7
3. PARTS LIST	8
3.1 ACCESSORIES	8
4. CHARACTERISTICS AND RANGE OF APPLICATIONS	9
4.1 CHARACTERISTICS	9
4.2 RANGE OF APPLICATIONS	9
4.2.1 Work Area	9
4.2.2 Pipe Materials	10
5. RECEIPT INSPECTION	10
5.1 CHECK THE CONTENTS OF THE DELIVERY	10
5.2 TRANSPORTATION	10
6. OPERATION	11
6.1 PREPARATION	11
6.2 MOUNTING THE ROTARY PEELER ONTO THE PIPE	11
6.3 PEELING THE PIPE	12
7. MAINTENANCE	13
7.1 EXCHANGE OF SPARE PARTS	13
7.1.1 Changing the Peeling Blade	13
7.1.2 Changing the Feed Rolls	13
8. WHAT TO DO	14
8.1 PROBLEM SOLVING	14
8.2 SERVICING / CUSTOMER SERVICE	15

## GENERAL INFORMATION

To allow a quick understanding of these instructions and safe handling of the tool, all the warning messages, notes and symbols used in these instructions are presented here along with their meaning.

### WARNING MESSAGES


In these instructions, warning messages are used to warn you about the dangers of injury or material damage. Always read and observe these warning messages!

Symbol	Meaning
 Danger	Direct danger! Non-observance could result in death or critical injury.
 Warning	Possible danger! Non-observance could result in serious injury.
Attention	Dangerous situation! Non-observance could result in minor injuries or material damage.

Warning messages are always constructed according to a set pattern:

- Warning symbol
- Type and source of danger
- Possible consequences, explanation of the danger
- Restrictions (if applicable) (Display: ⊙)
- Measures to prevent danger (Display: ►)

### OTHER SYMBOLS AND DISPLAYS

Symbol	Meaning
Important Note	Notes: Contain particularly important information for understanding.
	Instruction: You must take notice of this symbol.
1.	Request for action in a sequence of actions: You have to do something here.
►	Single request for action: You have to do something here.
▷	Conditional request for action: You have to do something here, if the specified condition is met.

## ABBREVIATIONS

Symbol	Meaning
RS	Rotary Peeler

### 1. SAFETY NOTES

The Rotary Peeler (also referred to as RS) is state of the art. Usage for purposes other than that described in these instructions can lead to personal injury to the user or others. In addition, the tool or other items could be damaged.

Any person in the company, who is involved in the assembly, disassembly, reassembly, installation, operation or maintenance (inspection, maintenance work, repair work) of the Rotary Peeler, must have read and understood the complete instruction manual, and in particular Section 1 on "Safety instructions".

- The tool should only be used when in perfect working order.
- Always follow the safety instructions.
- This instruction manual should be kept in the vicinity of the tool.

#### 1.1 PROPER USE

The Rotary Peeler RS should be used for pipe surface preparation prior to installation of electrofusion fittings.

#### 1.2 SAFETY INSTRUCTIONS

- Use only original Georg Fischer spare parts and equipment.
- Inspect the Rotary Peeler daily for visible signs of damage or defects. Have damage or defects repaired immediately.

#### 1.3 WORK SAFELY

"Make your contribution to safety in the workplace."

- Report any deviations from normal operation immediately to the person in charge.
- Always keep safety in mind while working.



#### **Danger of cutting hands!**

The peeling blade is sharp!

Danger of cutting hands on the peeling blade.

⊘ Do not touch the rotating peeling blade.

---

## **1.4 WASTE DISPOSAL**

Shavings should be disposed of properly.

## **1.5 FURTHER SAFETY REGULATIONS**

Observe country-specific regulations, norms and guidelines.

# **2. GENERAL**

## **2.1 INTRODUCTION**

This instruction manual was written for those persons responsible for the operation and care of the Rotary Peeler. It is expected and assumed that such persons have read, understood and will abide by the manual in its entirety.

Only with the knowledge contained in this manual can faults on the Rotary Peeler be prevented and trouble-free operation be ensured. It is therefore imperative that the responsible persons are familiar with this manual.

We recommend that this manual be read carefully prior to putting the tool in operation, as we are not liable for any damage or interruptions in operation resulting from failure to comply with this manual. Should problems arise, please contact the nearest Georg Fischer representative (see back of this manual).

This manual applies only to the Rotary Peeler.

We reserve the right to make the technical changes necessary to improve the Rotary Peeler which may result in periodic changes to the illustrations and information contained in this manual. Contact Georg Fischer Central Plastics LLC for the latest revision.

## **2.2 RANGE OF APPLICATION**

The Rotary Peeler RS should be used exclusively for universal peeling at the pipe end for electrofusion couplings, tees and elbows and as well as for electrofusion saddles. Any other use is not authorized. The manufacturer cannot be held liable for damages resulting from unauthorized use; the user bears sole responsibility.

## **2.3 FUNDAMENTAL TIPS**

Electrofusion for PE pipes and PE fittings enables safe, efficient and economical installation of piping systems.

Because of the high quality standards of our products, tools and resources, the joints are easy to make.

However, careful preparation of the fusion surface is the absolute prerequisite and should not be neglected!

### 2.3.1 General Tips for Preparation and Assembly of Fittings

- Fusion zones should be well protected from moisture during inclement weather (rain, snowfall etc.).

**The pipe should be cleaned of all debris before the Rotary Peeler. Use care to remove all embedded debris from the pipe surface or damage to the blade can occur.**

- The following scraping measurements should be maintained:

Pipe Size	Minimum Chip Thickness	Maximum Chip Thickness*
1 1/4 - 8 in.	0.007 in.	0.012 in.*
> 8 in.	0.007 in.	0.015 in.*

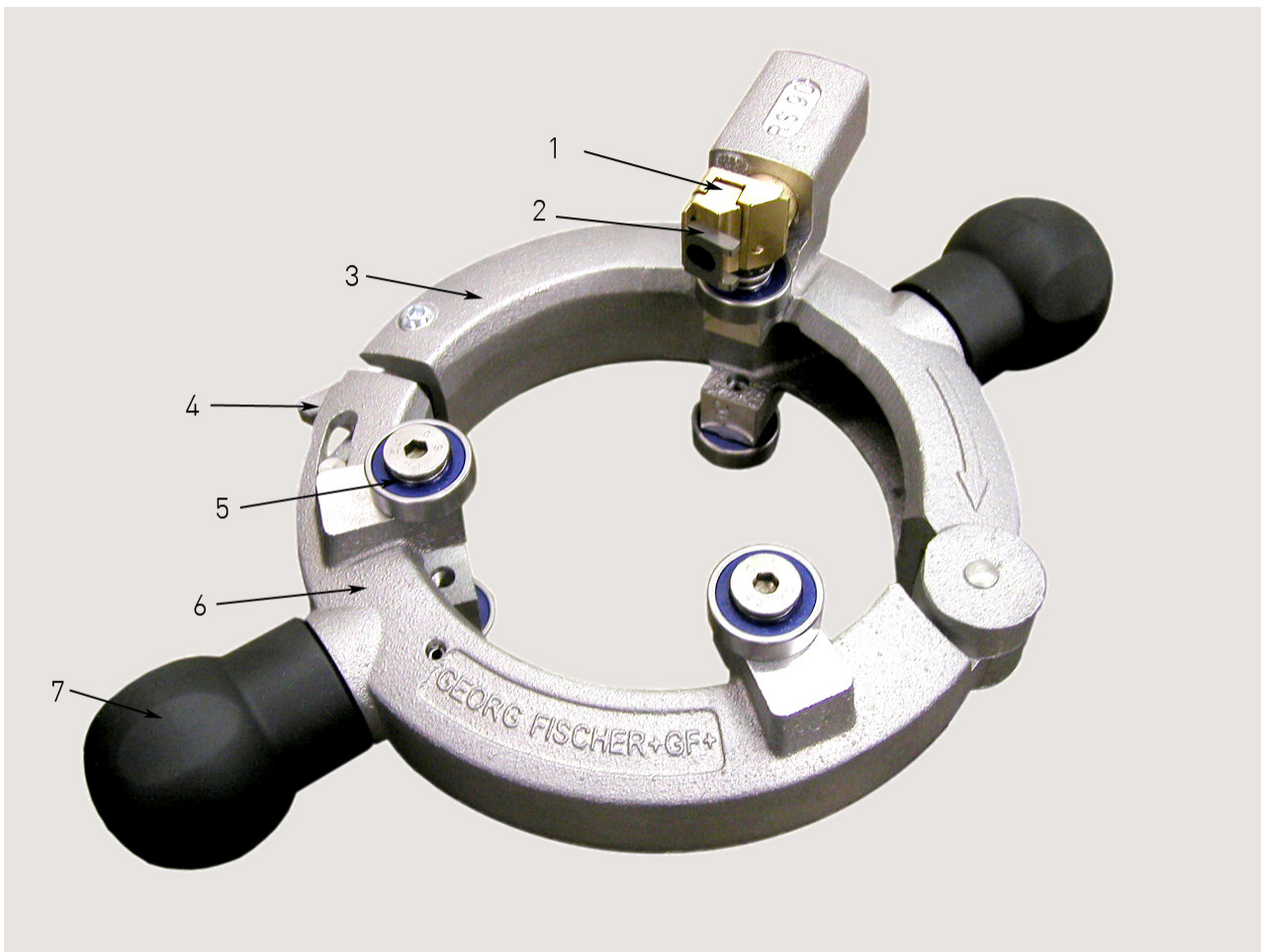
Note: Maximum permissible pipe ovality: 1.5%. Pipes that exceed 1.5% ovality should be rounded with clamps on either side of the area to be peeled

### 2.4 COPYRIGHT

The copyright for this instruction manual is held by Georg Fischer Piping Systems Ltd.

**Georg Fischer Central Products LLC.**  
**39605 Independence**  
**Shawnee, OK 74804**

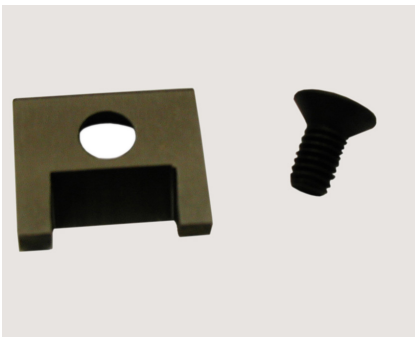
### 3. PARTS LIST



- 1. Pendular with Nut
- 2. Peeling Blade
- 3. Upper Part
- 4. Release Handle

- 5. Feed Rolls
- 6. Lower Part
- 7. Handle

#### 3.1 ACCESSORIES



Replacement blade for Rotary Peeler

For all Rotary Peelers in sizes 1 1/4 through 12 inch.  
Includes countersunk screw.

Part no. 10014419



## 4. CHARACTERISTICS AND RANGE OF APPLICATIONS

### 4.1 CHARACTERISTICS

- **Spring loaded peeling blade**  
Independent peeling quality of pipe ovality or tolerances.
- **Pivoted mounted peeling blade**  
To compensate for pipe ovality from coiling up to 1.5%.
- **Optimized cutting geometry**  
Defined chip thickness with cutting width overlap.
- **One tool per dimension**  
Minimized swivel radius for peeling in narrow locations.
- **Hinged-opening tool**  
Peeling for saddles with the same tool.
- **Peeling length**  
No limitation of peeling length.
- **Feed rolls**  
3 point support for dimensional optimized cutting feed, time saving.
- **Feed rolls with smooth surface**  
No damage of pipe surface, no dirty feed rolls.
- **Time saving**  
Tool is always ready to use, it can be used for the next peeling without setting the peeling blade back in its origin position.

### 4.2 RANGE OF APPLICATIONS

#### 4.2.1 Work Area

Rotary Peeler	For Pipe Outer Diameter (in)	Part Number
RS 1 ¼ IPS	1.66	360029223
RS 1 ½ IPS	1.90	360029224
RS 2 IPS	2.375	360029225
RS 3 IPS	3.5	360029226
RS 4 IPS	4.5	360029227

Rotary Peeler	For Pipe Outer Diameter (in)	Part Number
RS 6 IPS	6.625	360029228
RS 8 IPS	8.625	360029229
RS 10 IPS	10.75	360029230
RS 12 IPS	12.75	360029231
RS 4 DIPS	4.800	360060049
RS 6 DIPS	6.900	360060050
RS 8 DIPS	9.050	360060051

#### 4.2.2 Pipe Materials

- MDPE
- HDPE
- PEX
- PP

## 5. RECEIPT INSPECTION

### 5.1 CHECK THE CONTENTS OF THE DELIVERY

- Check the delivery for completeness and any transportation damage.
- Report any missing parts or transportation damage to your supplier immediately.

Package Contents\*

- Transport Box
- One (1) Rotary Peeler RS
- One (1) Operating Manual with Spare Parts List

\*] Subject to Alterations

### 5.2 TRANSPORTATION

The Rotary Peeler is a portable, hand-operated tool. Special transportation aids are not required.



#### **Danger of cutting hands!**

The peeling blade is sharp!

Danger of cutting hands on the peeling blade.

⊗ Do not touch the rotating peeling blade.

## 6. OPERATION

### 6.1 PREPARATION

Observe and follow all requirements for proper pipe preparation and assembly of fittings as required by the electrofusion installation manual.

**Important:** Clean the pipe of all abrasive substances (sand, clay, embedded rocks, etc.). Scraping without cleaning the pipe could damage or dull the blade very quickly. A damaged or dull blade will affect the peeling quality and could result in poor joint quality.

#### **Always check the condition of the tool before use:**

Make sure the feel rollers are clean and move freely.

Make sure the blade is sharp and free of any oil or contaminates. Clean with alcohol if necessary.

Carefully make sure the spring loaded blade pendular operates freely side to side and up and down throughout it's complete range of travel. Clean any debris or build up that prevents free movement.

### 6.2 MOUNTING THE ROTARY PEELER ONTO THE PIPE

1. Mark the peeling length (end position) at the pipe - when doing electrofusion saddle preparations mark the start and end position.
  - 1.1 When making electrofusion saddle preparations mark the start and end position.
  - 1.2 When making electrofusion coupling preparations mark the peel length at least 1/2 the length of the coupling.
2. Open the Rotary Peeler by lifting the release handle (See illustration 1).
3. Put the Rotary Peeler around the pipe and lock by lowering the release handle (See illustration 3). For optimal performance, the blade (2) of the Rotary Peeler should be located approximately 2/3 over the end of the pipe (See illustration 4).

The Rotary Peeler is now mounted on the pipe.



Illustration 1



Illustration 2

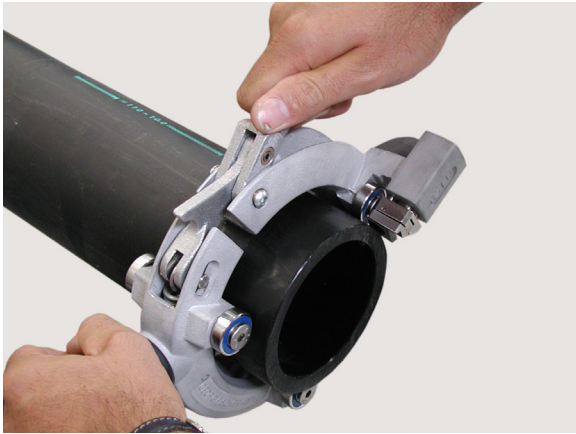


Illustration 3

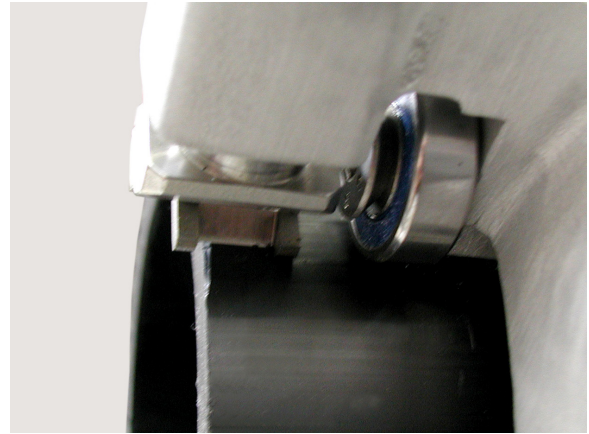


Illustration 4

### 6.3 PEELING THE PIPE

1. Turn the Rotary Peeler by handles (See illustration 5) around the pipe in shaft direction (See illustration 6), until the desired peeling length is reached. The chip, which results by peeling with the GF Rotary Peeler, should automatically separate at the end of operating by removing the Rotary Peeler. If this is not the case, the chip can be removed by hand.

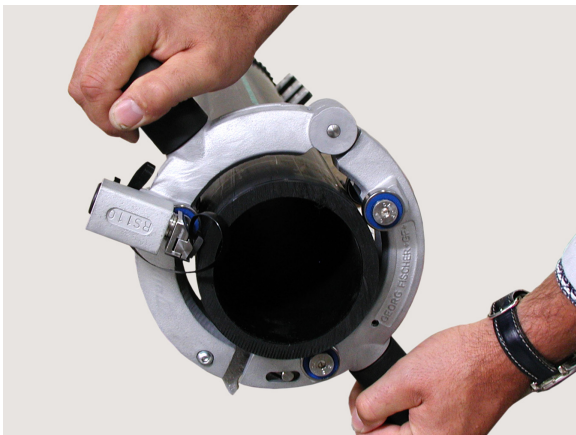


Illustration 5

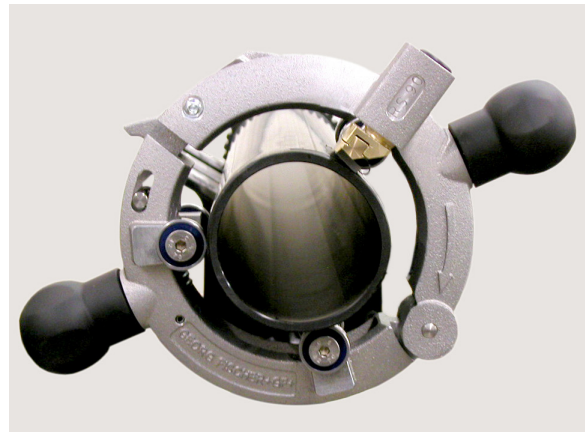


Illustration 6

2. Open the release handle (See illustration 7) and remove the Rotary Peeler from the pipe. Now the pipe is optimally prepared for the subsequent processing. Inspect the peeled pipe surface thoroughly for any indications that material was not removed over the entire peeled surface. Marks made prior to scraping or indented pipe print lines should be completely removed and a uniform virgin pipe surface should be exposed.

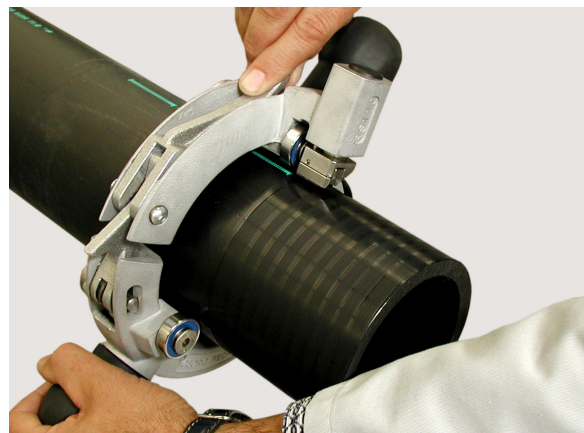
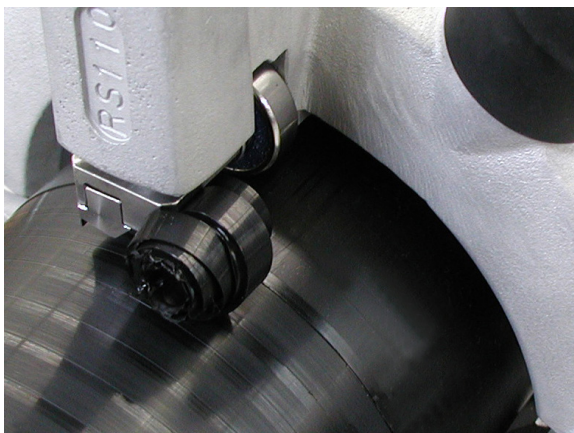


Illustration 7



## 7. MAINTENANCE

### 7.1 EXCHANGE OF SPARE PARTS



#### **Danger of cutting hands!**

The peeling blade is sharp!

Danger of cutting hands on the peeling blade.

⊘ Do not touch the rotating peeling blade.

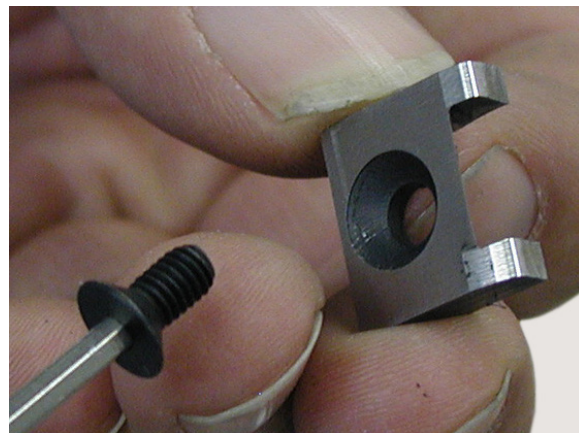
#### **7.1.1 Changing the Peeling Blade**

The peeling blade should be changed periodically. For ordering spare parts, see the spare parts list.

1. Remove flat head screw (See illustration 8) with hexagon wrench key SW 2.5.
2. Change peeling blade.
3. Tighten flat head screw.



Illustration 8



#### **7.1.2 Changing the Feed Rolls**

For ordering spare parts, see the separate spare parts list.

1. Loosen flat head screw (See illustration 9) with allen wrench.
2. Change feed rolls.
3. Tighten flat head screw.



Illustration 9



## 8. WHAT TO DO

### 8.1 PROBLEM SOLVING

The following table shows you possible faults and their remedy.

<b>Fault</b>	<b>Possible Cause</b>	<b>Remedy</b>
Chip thickness too small.	Dull blade.	Change peeling blade (see chapter 7.1.1, p. 14).
Peeling blade does not work correctly or hooks into the material during operation.	Dull or chipped blade.	Change peeling blade (see chapter 7.1.1, p. 14).
Feed is too much.	Axial force of operator too high.	Reduce axial force.
Does not track forward on rotation.	Rollers sticking.	Clean or change feed rolls (see chapter 7.1.2, p. 15).

## 8.2 SERVICING / CUSTOMER SERVICE

For ordering spare parts, see the spare parts list below.

For problem solving, please contact your branch office directly. You will find contact information in the back of this manual.

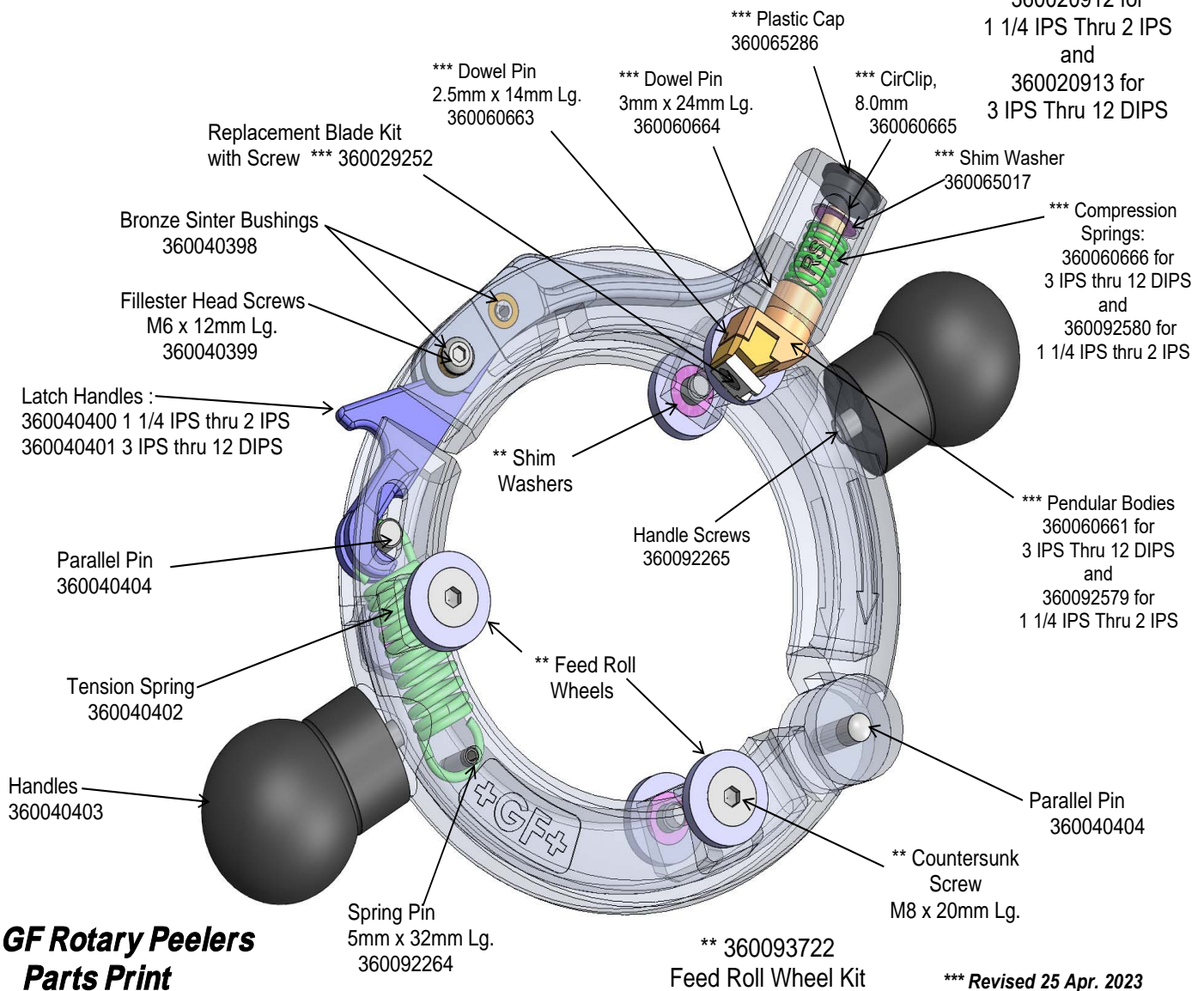
Please give the following details:

Machine type: Rotary Peeler e.g. RS - size



**GF CENTRAL PLASTICS, LLC**  
39605 INDEPENDENCE, SHAWNEE, OK 74804, USA

\*\*\* Pendular Assemblies  
with Blades installed:  
360020912 for  
1 1/4 IPS Thru 2 IPS  
and  
360020913 for  
3 IPS Thru 12 DIPS



For more information, please contact:

GEORG FISCHER CENTRAL PLASTICS  
39605 Independence, Shawnee, OK 74804

(800) 654-3872  
(405) 273-6302

GFCentralMarketing@georgfischer.com  
[www.gfcp.com](http://www.gfcp.com) / [www.gfpiping.com](http://www.gfpiping.com)

Manual 360045614 (June 2021)